

Technical Support Article



Article Number - 00004-2010

Date - 13th May 2010

Article applies to – WL50, WL200, WL400 or WL500 adaptors with Mac OSx 10.6 or higher

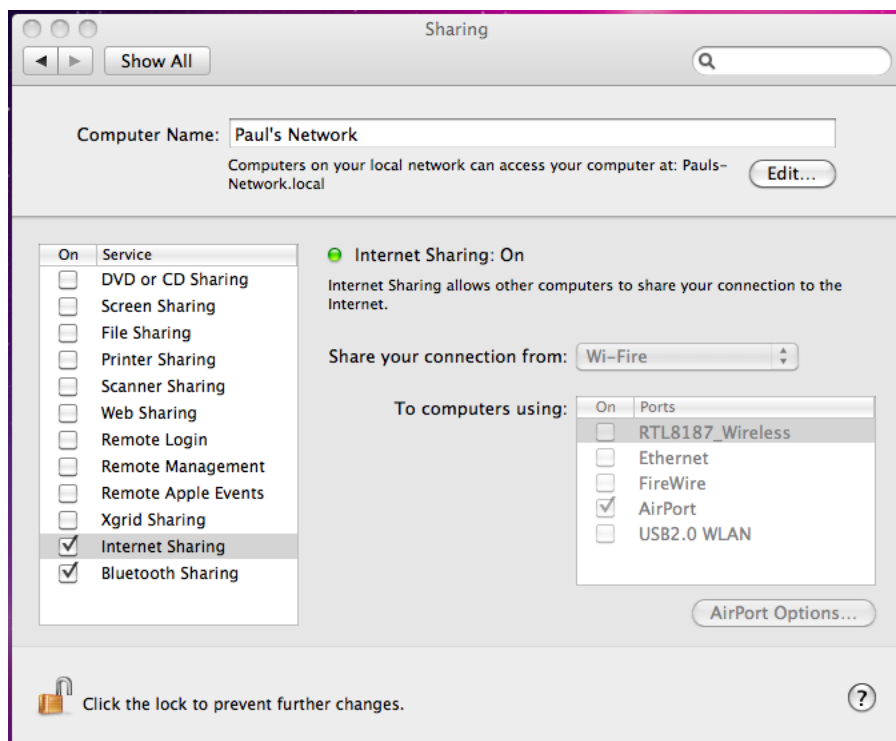
ISSUE: Sharing a Long Range Internet Connection on a Mac

The Digital Yacht range of Long Range Wifi Adaptors are typically used to connect a single laptop or marine PC to the Internet via a shore based WiFi Hotspot (Access Point). If multiple computers or wireless devices need to share the same internet connection, then it is necessary to setup a wireless network on the boat.

The local wireless network is created using the Airport Adaptor of the Mac that has the Digital Yacht Long Range Wifi Adaptor connected to it. This Mac must be turned on whenever the wireless network and shared internet connection is required. Any Wifi compatible PC or device that has an internet browser should be able to connect to the local wireless network and share the internet connection.

Before following the procedure below, it is important that you turn off the Airport Adaptor and connect to a wireless network with internet connection using your WL50, WL200, WL400 or WL500 wifi adaptor. Then to set up internet sharing:

- 1) Choose Apple menu > System Preferences and click Sharing. Then select Internet Sharing – you should see the window below.



- 2) Click on the locked padlock and when prompted, enter your system/admin password. This is required by the Mac OSX operating system before it will allow you to make changes to the sharing settings
- 3) Choose the Internet connection you want to share from the “Share your connection from” pop-up menu. In Snow Leopard this will be RTL8187 for the WL400 and WL200 (blue housing model) adaptors, while it will be “Wi-Fi” for all other Digital Yacht adaptors
- 4) Select how you want to share your Internet connection in the “To computers using” list. In nearly all cases this will be AirPort, unless you have some other Wifi Adaptor connected to the Mac
- 5) Assuming you are using the AirPort, click AirPort Options and you will see the window below. Click “Enable Encryption” and then enter a network name and password (5 digit). The network name is the wireless network name (SSID) that people will see when they try to connect

Network Name: Paul's Network

Channel: Automatic

Enable encryption (using WEP)



Password: ●●●●●

Confirm Password: ●●●●●

WEP Key Length: 40-bit (more compatible)

If you plan to share your Internet connection with non-Apple computers, use a 5 character password for a 40-bit WEP key, and a 13 character password for a 128-bit WEP key.

Cancel OK

- 6) Once the network name and password are set, click “OK” and you will be returned to the previous window. Click the check box next to the Internet Sharing entry in the service list and you will see a pop up window telling you that the AirPort is Off – click to turn the Airport On
- 7) You will now see a pop up window asking if you want to turn on Internet Sharing – Click “Start”
- 8) You should see that the normal AirPort Icon  has changed to  the Internet Sharing symbol

It should now be possible to connect other wireless devices to the network you have created and for all connected devices to use the Digital Yacht Long Range Wifi Adaptor to get internet connection.

Only the Mac physically wired to the Digital Yacht Long Range Wifi Adaptor can control which shore based Wifi Hotspots to connect to and this Mac must be turned on and connected to the Wifi Hotspot in order for the other devices to connect to the internet.